

# DLT-V83 Reloaded Series

## Rugged, High-Performance Vehicle-Mounted Terminal



### Features

- 10/12/15" color TFT display
- Intel® Core™ i5-7300U/Celeron® 3965U dual-core processor
- Rugged, IP66-rated design with 5M2/5M3 certification
- Fully configurable to support specific application requirements
- IK08-certified touchscreen for impact tolerance and abrasion resistance
- Wide operating temperature range (-30 ~ 50 °C/-22 ~ 122 °F) to withstand extreme environments
- Supports latest WLAN standard with seamless Wi-Fi roaming capability
- Supports WWAN for outdoor operations
- Certified with SOTI and Navis N4 software
- Equipped with DeviceOn/iService software for remote device management

### DeviceOn/iService

### Introduction

The DLT-V83 Reloaded Series are rugged vehicle-mounted terminals designed to increase productivity and maximize system uptime for logistics applications. Powered by an 7th generation Intel® Core™ i5/Celeron® processor, DLT-V83 Reloaded terminals support a wide operating temperature range (-30 ~ 50 °C/-22 ~ 122 °F) to withstand operation in extreme industrial environments (from hot and humid, to dry freezer environments). Deployment of this series ensures data integrity and integration across all logistics operations. Furthermore, the high system configurability, connectivity, and interface diversity allows the terminals to be easily customized to support specification application requirements.

Moreover, DLT-V83 Reloaded series is equipped with Advantech's DeviceOn/iService software, which is a next-generation unified device management solution based on the WISE-DeviceOn platform. With support for batch operations and multi-device control, DeviceOn/iService enables easy device configuration and deployment for convenient remote device management.

### Specifications

System	CPU	Intel® Core™ i5-7300U dual-core, 2.6 GHz, with 4/8 GB RAM Intel® Celeron® 3965U dual-core, 2.2 GHz, with 4/8 GB RAM
	Storage	16 GB - 256 GB CFast 128 GB - 512 GB 2.5" SSD (Optional)
Housing		Coated aluminum with completely sealed, fanless design
Dimensions (W x H x D)	DLT-V8310	289.3 x 262.8 x 89 mm (11.39 x 10.35 x 3.50 in)
	DLT-V8312	328.4 x 293.9 x 94.7 mm (12.93 x 11.57 x 3.73 in)
	DLT-V8315	390 x 342 x 98 mm (15.35 x 13.46 x 3.86 in)
Weight	DLT-V8310	4.3 kg (9.47 lb) without antenna
	DLT-V8312	5.5 kg (12.12 lb) without antenna
	DLT-V8315	6.2 kg (13.66 lb) without antenna
Display	DLT-V8310 (i5 and Celeron Models)	10.4" XGA color TFT with 1024 x 768 resolution and 400 cd/m² brightness
	DLT-V8310 (Celeron Model)	10.4" SVGA color TFT with 800 x 600 resolution and 400 cd/m² brightness
	DLT-V8312 (i5 and Celeron Models)	12.1" XGA color TFT with 1024 x 768 resolution and 500 cd/m² brightness
	DLT-V8315 (i5 and Celeron Models)	15.1" XGA color TFT with 1024 x 768 resolution and 400 cd/m² brightness
Touchscreen	Type	High-impact tolerant touchscreens available with two control types: - Resistive touchscreen with 5/26 x control buttons - Sunlight-readable resistive touchscreen with 26 x control buttons (Celeron model only)
Control Buttons	Front Panel	26 keys control buttons (for 10", 12", and 15") 5 keys control buttons (for 10", on request)
Software	Operating System	Windows 10 IoT Enterprise LTSC 2019 & 2021, Debian based Linux
	Emulations (Third-Party)	VT100, VT220, IBM 5250, TN 3270, Citrix Client®
Communication	WLAN	WLAN IEEE 802.11 a/b/g/n/ac (Optional)
	WWAN	WWAN (LTE, UMTS, HSPA+, GSM, GPRS, EDGE) (Optional)
	LAN	Ethernet 10/100/1000 Mbit/s with optional secondary Ethernet
	WPAN	Bluetooth 5.0 (Optional)
I/O Interfaces	Serial	2 x RS-232, alternatively 1 x RS-232 and RS-422/485
	USB	3 x USB 2.0 (Hi-Speed™) bootable, 1 x service USB 2.0 (Hi-Speed™) bootable
	CAN	Optional
	External Antennas	2 x RSMA for WLAN, 2 x SMA for WWAN (optional)
Audio		1 x integrated speaker (2W)
Power Supply (Internal)		12/24/48 V <sub>DC</sub> nominal voltage with automatic Power On/Off functionality via vehicle ignition; 110/230 V <sub>AC</sub> , 50/60 Hz, optional for DLT-V8315
Environmental	IP Rating	IP66 rating for the entire system
	Touchscreen Durability	IK08 according to IEC 62262
	Operating Temperature	-30 ~ 50 °C (-22 ~ 122 °F)
	Relative Humidity	10 to 90% at 40 °C (104 °F), non-condensing
	Shock/Vibration	5M3(EN 60721-3-5) for 10" and 12", 5M2 (EN 60721-3-5) for 15" and MIL-STD 810F (US highway truck vibration exposure)
Certification		CE Immunity Class A, Emission Class B/FCC Class B, CCC (for China)

## Specifications Cont.

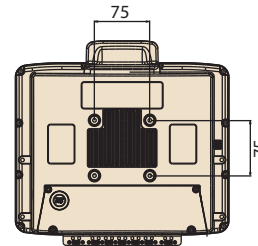
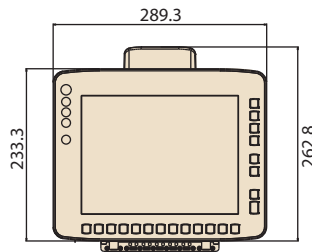
DeviceOn/iService Remote Device Management	Operating System	Windows 10
	Common Controls (Reboot, Shutdown)	✓
	Remote desktop	✓ (VNC)
	Device-Specific Audio Control	✓
	Connection Status	✓
	Hardware Status	✓*
	Hard Disk Status	✓*
	Batch Operation Support	✓
	OTA Storage Management	FTP
	OTA Software Application Update	✓
	Software Watchlist	✓
	Software Start/Stop	✓*
	Kiosk Mode	
*Dependant on device model	Peripherals Watchlist	✓*

Note: DeviceOn/iService software must be downloaded from the Advantech website at <https://www.advantech.com/search/?q=DeviceOn%2FiService&st=support&sst=Utility>

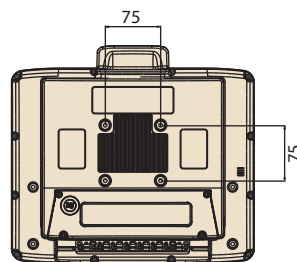
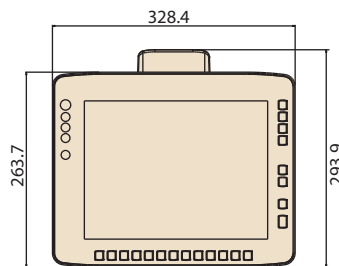
## Dimensions

Unit: mm

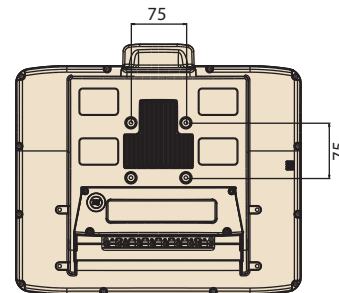
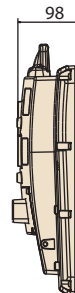
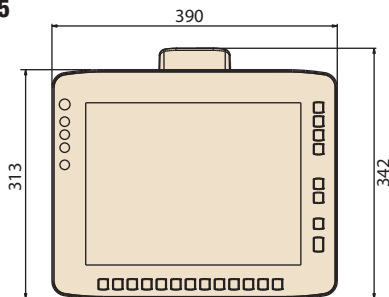
**DLT-V8310**



**DLT-V8312**



**DLT-V8315**



## Optional Accessories

Part Number	Description
DL-MTKT009	Mobile Mounting Bracket
DL-MTRM004	RAM-Mount Set, one arm, arm length 130mm
DL-MTRM003	RAM-Mount Set, one arm, arm length 215mm
DL-MTRM001	RAM-Mount Set, two arms, arm length 150mm

Further configurations on request!

## Mobile Mounting Bracket



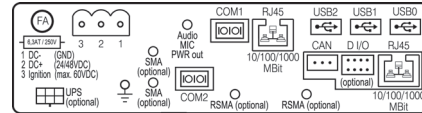
### RAM-Mount Set (one arm)



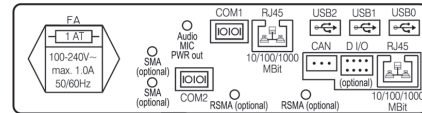
**RAM-Mount Set  
(two arms)**



## I/O Connectors

**VDC**

**VAC –option only available for DLT-V8315**



# DeviceOn/iService

## Unified Remote Device Management Software



### Features

- Supports Advantech devices equipped with Windows, Android, and Linux OS
- Flexible device, location, user, and permissions management
- Enables remote monitoring and control of hardware, software, and peripherals
- Supports over-the-air (OTA) firmware and software updates
- Ensures quick, easy, and secure device onboarding
- RESTful APIs for third-party system integration

## Introduction

Advantech's DeviceOn/iService is a next-generation unified device management solution based on the WISE-DeviceOn platform. Designed to enable centralized monitoring and remote management, DeviceOn/iService supports Advantech devices equipped with Windows, Linux, or Android operating systems. The software also supports the management of applications and integrated peripherals, such as a barcode scanner, card reader, camera, and printer. Users can remotely access and control connected devices, take screenshots, rollout OTA upgrades, and use remote desktop capabilities for troubleshooting from any location at any time. Moreover, DeviceOn/iService supports batch operations to facilitate the management of multiple devices simultaneously for easy and convenient device configuration and deployment.

## Total Management



### Devices & Hardware

- Windows, Linux, Android
- Hardware, storage, battery



### Software & Peripherals

- Software monitoring & access
- Screens, USB devices, printers



### Open for Expansion

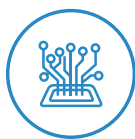
- Peripheral integration
- Open APIs for integration

## Remote Access



### Real-Time Monitoring

- Connection/hardware status
- Software/peripheral status
- Failure notifications



### Remote Controls

- Power controls
- Audio, backlight controls
- Software controls



### Troubleshooting

- Screenshots
- Remote desktop support

## Operational Efficiency



### OTA updates

- System/software updates
- File repository management
- App store



### Batch Controls

- 1-to-many batch reboot, etc.
- Time-saving tasks



### Setup Booster

- Software/peripheral watchlist
- Roles, rule templates

Note: Some functions may vary according to the product

## System Architecture

